

Milton Fall Fair

September 22, 23, 24, 2023

Advance Prize List

Homecraft & Children's Sections



Tel: 905-878-5689
miltonfair@cogeco.net

<https://assistexpo.ca/milton-fall-fair>

Also available on our website: www.miltonfair.com

Contents

Welcome to the 168 th Milton Fall Fair.....	2
RULES & REGULATIONS.....	3
Class 34 - VEGETABLES	4
Class 35 - FRUITS/MISCELLANEOUS PRODUCE	6
Class 36 - NEEDLECRAFT.....	10
Class 37 - DOMESTIC SCIENCE	15
Class 38 - ANTIQUES / COLLECTIBLES	20
Class 39 - FLOWERS AND PLANTS	22
Class 41 - ART AND CRAFTS	25
Class 42 - CREATIVE PHOTOGRAPHY.....	28
Class 43 - PHOTOGRAPHY FOR SCHOOL STUDENTS.....	31
Class 44 - YOUTH FLOWER SPECIAL	33
Class 45 - CHILDREN'S PRIZE LIST.....	34
Class 46 - INDIVIDUALS WITH SPECIAL NEEDS	41
Class 47 - YOUTH VEGETABLES/FRUIT/MISCELLANEOUS PRODUCE.....	43
Class 48 - MARJORIE HALL MEMORIAL FUND YOUTH POSTER COMPETITION	44
Class 49 - SAFETY POSTER CONTEST.....	45
New to our Fair?	46



Welcome to the 168th Milton Fall Fair

The Homecraft members of the Milton Fair have been busy updating the prize list. Our Theme for the 2023 Fair is “**Country Fun for Everyone**”. We are pleased to showcase many talents from the community in a wide variety of classes.

Spend some time browsing the Fair Prize List to choose classes that suit your talents. All classes and the entry form can be found on our website. We welcome new ideas, so please let us know if there are any classes or changes that we can make for the future.

Winners from Butter Tarts, Maple Syrup, Honey, Machine and Handmade Quilts, Youth Chocolate Chip Cookies, and Youth Posters represent our Fair at a District Competition in October. District winners go on to compete at the Ontario Association of Agricultural Societies Annual Convention in February each year.

Special thanks to the Homecraft members, Board of Directors, volunteers and our Secretary/Treasurer who have worked tirelessly to present the 2023 edition of the Advance Prize List. Thank you also to the Sponsors and, of course, the Exhibitors who showcase their talents! We welcome new volunteers so please contact the office if you are interested.

See you at the Fair !!

Your Homecraft Committee

RULES & REGULATIONS HOMECRAFT/CHILDREN'S ADVANCE PRIZE LIST 2023 Theme: “Country Fun for Everyone”

Homecraft Rules and Regulations – (For classes 34-49)

1. There is no exhibitor fee to enter. In lieu of entry fee, on prize money over \$10, 10% of the prize money earned plus HST will be deducted unless otherwise stated.
IMPORTANT – ALL Entries must be submitted ONLINE via Assist Expo at <https://assistexpo.ca/milton-fall-fair> by Friday September 15, 2023. If you need assistance registering online, please call or visit our office before the deadline date. Late entries are NO LONGER able to be accepted.
2. Please make all entries for exhibits in the halls early. The fair office will be open two weeks prior to the Fair, starting September 11th from 9:00 am to 4:00 pm Monday to Friday.
3. Exhibits to be placed in the halls on Wednesday, September 20th from 6:00 pm-9:00 pm or on Thursday, September 21st from 9:00 am-11:00 am (Check each class for closing time on Thursday to bring in exhibits.) The halls will then be closed and judging will commence at 11:00 am. Exhibits MUST remain in the halls until closing Sunday, September 24th, 2023. Halls close at 4:30 pm – pick-up will begin at 5:00 pm. **The Halton Agricultural Society is not responsible for exhibits not picked up by 6:00 pm.** Halls close promptly at 6:00 pm. You must present your hall pass in order to pick up your entry.
4. Exhibits may be disqualified at the judge's discretion. New work will be given priority. The decision of the judge is final and the judge may withhold any award if in their opinion the exhibit is not worthy. All work must be done by the exhibitor.
5. Any Organized Group may compete as an individual – prize money to go to the Group Treasury.
6. Directors are not responsible for loss or damage of exhibits.
7. Prize money for adult classes will be mailed. Children's prize money is to be picked up Sunday, September 24th at 5:00 pm upon presentation of stamped exhibitor's pass.
8. Directors reserve the right to award extra prizes or to split the class if it is unusually large.
9. Judges shall have discretionary power to withhold the first or any prize where they deem an article unworthy.
10. All articles to remain (untouched by the owner or any person) in the charge of the committee throughout the Fair.
11. In case an error occurs in the printing of the Prize List, the Directors have the authority to rectify same.

PHONE: Fair Office at 905-878-5689

Email: miltonfair@cogeco.net

<https://assistexpo.ca/milton-fall-fair>

Please note: Children's Rules differ from above

REFER TO CHILDREN'S SECTION

Class 34 - VEGETABLES

Committee: Wendy Cousins (905-335-5724), Judi Oates, Glenda Scott

IMPORTANT – ALL Entries must be submitted ONLINE via Assist Expo at <https://assistexpo.ca/milton-fall-fair> by Friday September 15, 2023. If you need assistance registering online, please call or visit our office before the deadline date. Late entries are NO LONGER able to be accepted.

VEGETABLES/FRUIT/MISCELLANEOUS PRODUCE

(1) All exhibits must be grown by the exhibitor. (2) Only 1 entry per person per class is permitted. (3) Entries exhibited on a paper plate. (4) **Please make specimen's in the same category as uniform as possible.** If not specified, Society is not responsible for indoor exhibits not removed by 6:00 pm Sunday, September 24th unless arrangements have been made between the exhibitor and the Committee in Charge. (5) Please refer online to '*Tips to Horticultural Exhibitors Preparing Vegetable Exhibits*' for direction/ideas on how to exhibit your produce.

JUDGING STANDARDS: Horticultural judging standards by Ministry of Agriculture and Food. Specimen refers to entries of the same cultivar and uniform size.

BEETS: 6-8 cm in diameter, stems trimmed & rubbed clean, not washed or scrubbed, may be trimmed to 1" approximately.

LEEKs: Trimmed.

ONIONS: The roots should be removed just below the base of the bulb, but not peeled. Only jagged and outer scales should be removed. Tops should be cut one inch above the bulb.

TOMATOES: The specimens should be typical of the cultivar, ripe, well matched, firm and free of cracks. Calyx (stem) should be intact. Small varieties must be shown as a truss.

ROOT CROPS: Should be brushed clean, not washed, stems trimmed, variety names where possible.

CARROTS: Tops should be removed to at least 2 cm above crown. Roots should be cleaned and washed and tap roots left on.

CUCUMBERS: Entries should be well matched specimens, over 8 inches, not over ripe. Colour should be dark green. One quarter inch of stem should be on specimen.

PEPPERS: Leave at least 2 cm of stem.

PUMPKINS: Stem should be left attached but trimmed.

All eggs are to be home/farm produced. No store bought entries.

SECTION

- | | |
|---|----------------|
| 1. Basil, stems – 6 stems standing in water | \$5, \$4, \$3. |
| 2. Beans, green - 5 specimens | \$5, \$4, \$3. |
| 3. Beans, yellow - 5 specimens | \$5, \$4, \$3. |
| 4. Beans, green, flat - 5 specimens | \$5, \$4, \$3. |
| 5. Beets, table - 3 on a plate | \$5, \$4, \$3. |
| 6. Beets, cylinder - 3 on a plate | \$5, \$4, \$3. |
| 7. Cabbage, red - 1 head | \$5, \$4, \$3. |

- | | |
|---|----------------|
| 8. Cabbage, winter - 1 head | \$5, \$4, \$3. |
| 9. Cabbage, savoy - 1 head | \$5, \$4, \$3. |
| 10. Carrots, table - 4 ½ in. or larger - 5 specimens AOV | \$5, \$4, \$3. |
| 11. Carrots, table - up to 4 inches - 5 specimens AOV | \$5, \$4, \$3. |
| 12. Corn, sweet - 2 specimens | \$5, \$4, \$3. |
| 13. Garlic - 3 bulbs | \$5, \$4, \$3. |
| 14. Cucumbers, English - 2 specimens | \$5, \$4, \$3. |
| 15. Cucumbers, Field - 2 specimens | \$5, \$4, \$3. |
| 16. Eggplant - 1 specimen | \$5, \$4, \$3. |
| 17. Curly Kale - 3 stems in water | \$5, \$4, \$3. |
| 18. Kale - AOV - 3 stems in water | \$5, \$4, \$3. |
| 19. Leeks - 2 specimens | \$5, \$4, \$3. |
| 20. Okra - 1 specimen | \$5, \$4, \$3. |
| 21. Onions, white Spanish - 3 specimens | \$5, \$4, \$3. |
| 22. Onions, yellow Spanish - 3 specimens | \$5, \$4, \$3. |
| 23. Onions, purple Spanish - 3 specimens | \$5, \$4, \$3. |
| 24. Onions, Vidalia - 3 specimens | \$5, \$4, \$3. |
| 25. Parsnips, 3 on a plate | \$5, \$4, \$3. |
| 26. Peppers, sweet, banana - 3 specimens | \$5, \$4, \$3. |
| 27. Peppers, sweet, bell - 3 specimens | \$5, \$4, \$3. |
| 28. Peppers, jalapeno – 3 specimens | \$5, \$4, \$3. |
| 29. Peppers, red hot chili – 3 specimens | \$5, \$4, \$3. |
| 30. Peppers, habanero - 3 specimens | \$5, \$4, \$3. |
| 31. Peppers, hot – 3 specimens, any other variety | \$5, \$4, \$3. |
| 32. Potatoes, red variety - 3 specimens | \$5, \$4, \$3. |
| 33. Potatoes, white, oblong - 3 specimens | \$5, \$4, \$3. |
| 34. Potatoes, white, round - 3 specimens | \$5, \$4, \$3. |
| 35. Potatoes, fingerlings - 3 specimens | \$5, \$4, \$3. |
| 36. Pumpkin, field - 1 specimen | \$5, \$4, \$3. |
| 37. Pumpkin, pie - 2 specimens | \$5, \$4, \$3. |
| 38. Pumpkin, white - 1 specimen | \$5, \$4, \$3. |
| 39. Squash, buttercup - 2 specimens | \$5, \$4, \$3. |
| 40. Squash, butternut - 2 specimens | \$5, \$4, \$3. |
| 41. Squash, pepper - 2 specimens | \$5, \$4, \$3. |
| 42. Squash, spaghetti - 2 specimens | \$5, \$4, \$3. |
| 43. Squash, zucchini (small) - 2 specimens | \$5, \$4, \$3. |
| 44. Squash, longest zucchini | \$5, \$4, \$3. |
| 45. Sunflower, tallest stalk with head attached | \$5, \$4, \$3. |
| 46. Sunflower, tallest stalk with multiple heads | \$5, \$4, \$3. |
| 47. Sunflower, largest head only | \$5, \$4, \$3. |
| 48. Tomatoes, truss of Cherry variety | \$5, \$4, \$3. |
| 49. Tomatoes, red, slicing variety - 3 specimens | \$5, \$4, \$3. |
| 50. Tomatoes, plum variety - 3 specimens | \$5, \$4, \$3. |
| 51. Tomatoes, any other colour, slicing variety - 3 specimens | \$5, \$4, \$3. |
| 52. Collection of ornamental gourds in a small basket under 12" | \$5, \$4, \$3. |
| 53. Collection of edible flowers in water - at least 5 stems | \$5, \$4, \$3. |

54. Collection of Vegetables, at least 5 cultivars, in a max. 30" diameter container

Prize money for section 54 \$15, \$12, \$10, \$8.

Please include a 3" x 5" colour photo of your garden (not compulsory).

Points in Class 34 will be totaled for **Champion Rosette. Halton Agricultural Society Homecraft** Section offers \$10.00 to the exhibitor winning the highest score by points in Class 34.
 Score: 1st - 3 points, 2nd - 2 points, 3rd - 1 point.
Last year's winner ineligible.
 Previous year's winner of rosette may exhibit but is not eligible for rosette.

Best in Show – Ribbon, Additional Prize of \$5.00 given by the **Ashgrove Women's Institute.**

Judge's Choice - Ribbon

All exhibits must be removed between 5:00 pm and 6:00 pm Sunday, September 24th.

****YOUTH VEGETABLES/FRUIT/MISCELLANEOUS PRODUCE****

- SEE CLASS 47

Class 35 - FRUITS/MISCELLANEOUS PRODUCE
 Refer to Class 34 for instruction on how to prepare exhibits

Committee: Wendy Cousins (905-335-5724), Judi Oates, Glenda Scott

IMPORTANT – ALL Entries must be submitted ONLINE via Assist Expo at <https://assistexpo.ca/milton-fall-fair> by Friday September 15, 2023. If you need assistance registering online, please call or visit our office before the deadline date. Late entries are NO LONGER able to be accepted.

APPLES - 3 on a plate

- | | |
|------------------------------|----------------|
| 1. Empire | \$5, \$4, \$3. |
| 2. McIntosh | \$5, \$4, \$3. |
| 3. Spy | \$5, \$4, \$3. |
| 4. Crabapples | \$5, \$4, \$3. |
| 5. Any other variety (named) | \$5, \$4, \$3. |
| 6. Largest apple | \$5, \$4, \$3. |

PEARS - 3 on a plate

- | | |
|------------------------------|----------------|
| 7. Bartlett | \$5, \$4, \$3. |
| 8. Bosc Pear | \$5, \$4, \$3. |
| 9. Any other variety (named) | \$5, \$4, \$3. |

PLUMS - 5 on a plate

- | | |
|-----------------|----------------|
| 10. Any variety | \$5, \$4, \$3. |
|-----------------|----------------|

GRAPES - 3 bunches on a plate

- | | |
|-----------------|----------------|
| 11. Any variety | \$5, \$4, \$3. |
|-----------------|----------------|

MISCELLANEOUS

- | | |
|---|----------------------|
| 12. OAAS Maple Syrup | |
| Canada Grade A -Amber, Special (See PAGE 8) | \$5, \$4, \$3. |
| 13. 1 pint Maple Syrup, dark | \$5, \$4, \$3. |
| 14. OAAS Honey Special (See PAGE 9) | \$5, \$4, \$3. |
| 15. A table centerpiece featuring home-grown fruit. | \$10, \$8, \$6, \$4. |
| 16. One Dozen Brown Eggs | \$5, \$4, \$3. |
| 17. One Dozen White Eggs | \$5, \$4, \$3. |
| 18. One Dozen Eggs, any other colour | \$5, \$4, \$3. |
| 19. One Dozen Pullet Eggs | \$5, \$4, \$3. |

Points in Class 35 will be totaled for **Champion Rosette. Halton Agricultural Society Homecraft Section** offers \$10.00 to the exhibitor winning the highest score by points in Class 35.

Score: 1st - 3 points, 2nd - 2 points, 3rd - 1 point.

Last year's winner ineligible.

Previous year's winner of rosette may exhibit but is not eligible for rosette.

Best in Show – Ribbon, Additional Prize of \$5.00 given by the **Ashgrove Women's Institute.**

Judge's Choice - Ribbon

All exhibits must be removed between 5:00 pm and 6:00 pm Sunday, September 24th.



12. OAAS Maple Syrup Canada Grade A - Amber, Special

- Maple syrup exhibits shall consist of two (2) curved Kent style glass bottles (D&G #505188 Syrup Bottle with Handle), or equivalent, of Maple Syrup, Canada Grade A - Amber, each having a capacity of 250 ml.
- Entries must be labelled on the BOTTOM of the containers only with a supplied entry number or identifier. No other labels will be permitted.
- All maple syrup should have a flavour characteristic of its respective colour class and be free from any objectionable odour or taste.
- Any maple syrup entry containing any form of foreign material will be disqualified from the competition.
- An approved maple syrup colorimeter will be used to assess the colour. Maple syrup will be judged using the standards published by the OAAS in Agriculture & Horticulture Judging Standards for Ontario Fairs.
- Entry must be made solely by the person entering the competition. Winner will represent Milton Fair at the District Competition in October 2023.

Judging Standards: 30 Density, 40 Flavour, 20 Colour, 10 Clarity

Prize money in Section 12 is 1st - \$5, 2nd - \$4 and 3rd - \$3.

District Competition (October 2023)

- Same rules & regulations as above
- Each agricultural society is entitled to send their best of show to the district competition.
- If the exhibitor has won at more than one fair, the one closest to the exhibitor's home address is the agricultural society from which the entry will be sent to the district competition. The other agricultural societies may send their second place winner into the district competition. An exhibitor may only enter into one district competition.
- The OAAS will award a ribbon to exhibitors of winning entries at each district competition.

Provincial Competition (February 2024)

- Same rules & regulations as above
- It is a condition of entry that all maple syrup products entered become property of the OAAS. 1st and 2nd place entries will be placed up for auction at the convention.

14. OAAS LIQUID HONEY COMPETITION - Pure, Ontario #1, White

- Liquid Honey exhibits shall consist of two clear glass containers, each having a capacity of 500 grams (375 ml). Any honey entry containing any form of foreign material will be disqualified from the competition.
- Entries must be labelled on the BOTTOM of the containers only with a supplied entry number or identifier. No other labels will be permitted.
- Any honey entry containing any form of foreign material will be disqualified from the competition
- An approved colorimeter will be used to assess the colour. Honey will be judged using the standards printed in the OAAS Agriculture & Horticulture Judging Standards for Ontario Fairs.

Judging Standards: Appearance 45 points, Clarity 45 points, Containers 10 points

Prize money in Section 14 is 1st - \$5, 2nd - \$4 and 3rd - \$3.

District Competition (October 2023)

- Same rules & regulations as above
- Each agricultural society is entitled to send their best of show to the district competition.
- If the exhibitor has won at more than one fair, the one closest to the exhibitor's home address is the agricultural society from which the entry will be sent to the district competition. The other agricultural societies may send their second place winner into the district competition. An exhibitor may only enter into one district competition.
- The OAAS will award a ribbon to exhibitors of winning entries at each district competition.

Provincial Competition (February 2024)

- Same rules & regulations as above
- It is a condition of entry that all maple syrup products entered become property of the OAAS. 1st and 2nd place entries will be placed up for auction at the convention.

Class 36 - NEEDLECRAFT

Committee: Donna Parsons (905-854-2362), Heather Beckett, Betty Hughes, Meredith Mayhew, Berniece Medland, Caroline Patterson

IMPORTANT – ALL Entries must be submitted ONLINE via Assist Expo at <https://assistexpo.ca/milton-fall-fair> by Friday September 15, 2023. If you need assistance registering online, please call or visit our office before the deadline date. Late entries are NO LONGER able to be accepted.

NOTE: Judges are authorized by the Directors of this Society to discard all soiled, defaced or old work and are instructed to award prizes to new and up-to-date work. The decision of the judge will be final and the judge may withhold any award if in his/her opinion the exhibit is not worthy. All knitting, sewing and quilting must be done by hand, unless otherwise specified. Sample of material or yarn to accompany entry or will be disqualified.

Any Organized Group, (e.g. Women's Institute, I.O.D.E., Women's Auxiliary etc.) may compete as an individual in classes 1-91 inclusive. Prize money to go to the Group Treasury but is not allowed to compete at District level.

Please **do not** use straight pins on your tags, only **safety pins**.

QUILTS

The Grand Champion Quilt (must be hand quilted) will compete at the District 5 Meeting in October, 2023 and if a winner, goes into competition at the Ontario Association of Agricultural Societies' Convention in February, 2024, where the winner receives \$500. Exhibitor is permitted to retain ownership of the quilt.

If an exhibitor wins Grand Champion or Best of Show at other than her own fair or at more than one fair, the exhibitor must consider the Agricultural Society nearest her home address as the one from which the quilt will be sent to the District Meeting.

Prizes will be awarded to the exhibitor who places 1st - \$25, 2nd - \$15, or 3rd - \$10 at their District Annual Meeting. If an exhibitor does not wish their quilt to compete in this competition, please include this information on the entry form.

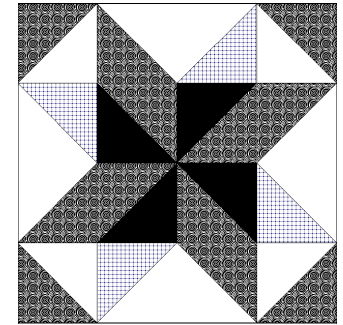
NOTE: Quilts in sections 1, 2, & 10 must be a minimum of 72" by 90" (perimeter min. 324"). (Smaller quilts will not be eligible to proceed to the next level of competition.)

Prize Money in Sections 1-22: 1st - \$10, 2nd - \$9, 3rd - \$8.

NOTE: A 2" (5 cm) square of material or yarn sample used in article to accompany entry or will be disqualified.

1. Quilt appliquéd, hand quilted, must be a minimum of 324" measured on the perimeter
2. Quilt pieced cotton, hand quilted, must be a minimum of 324" measured on the perimeter

3. Whole cloth quilt, hand quilted, must be a minimum of 324" measured on the perimeter
4. Quilt in any pattern, machine quilted, must be a minimum of 324" measured on the perimeter
5. Quilt Top pieced, not quilted, must be a minimum of 324" measured on the perimeter
6. Baby Quilt, made from preprinted panel, machine quilted, must be approx. 36" x 36"
7. Miniature Quilt less than 24" x 24" not preprinted
8. Quilt single bed size 60" X 72" inches, any technique, machine quilted
9. Lap Quilt, pieced, max. 45" x 45", quilted
10. Quilt, cross stitched, hand quilted, must be a minimum of 324" measured on the perimeter
11. **Machine Quilted Quilt** - not by long arm, must be solely made and machine quilted by individual, must be a minimum of 324" perimeter; article can be square or rectangle
12. Baby Quilt, pieced and quilted
13. Hand quilted wall hanging
14. Wool primitive quilt, quilted by hand
15. Quilted cushion
16. Crazy quilt, quilted 72" X 90"
17. Modern quilt, hand quilted 72" X 90"
18. Lap cover, knitted 45" X 45"
19. Afghan, knitted in blocks
20. Afghan, knitted in design of your choice
21. Afghan, crocheted in one piece
22. Lace throw, knitted or crocheted



Halton Hills Quilters Guild Prize Specials

1st - \$10, 2nd - \$8, 3rd - \$7.

- 23A. Quilt: minimum size 60"x 80"; any design, hand or machine quilted by either exhibitor or another.
- 23B. Wall Quilt: Traditional design, not to exceed 200 inches, must be completely made and quilted by exhibitor.
- 23C. Wall Quilt: Abstract or representational, not to exceed 200 inches, must be designed by exhibitor, will be judged on innovative design, unusual use of materials and stitches, piecing, embellishments as well as quilting and finishing.
- 23D. Baby Quilt: Minimum size 30" x 36", cannot use preprinted panel, completely made and quilted by exhibitor

SAMPLES TO BE INCLUDED

Prize money in Sections 24-80 will be: 1st - \$5, 2nd - \$4, 3rd - \$3.

Fair Theme: "Country Fun for Everyone"

The following items are to be made using material that utilizes the fair theme:

24. Pair of quilt blocks, not quilted
25. Apron
26. Tote bag
27. Scrappy wall hanging, Quilted (not over 600 sq inches)
28. Pair of place mats – household items samples to be included

HOUSEHOLD ITEMS – SAMPLES TO BE INCLUDED

29. Cushion, crocheted
30. Tote bag, any media
31. Cushion, any other media
32. Quilted wall hanging, unframed, ready to hang
33. Plastic bag holder
34. Counted cross stitch picture, framed, ready to hang, under 100 sq inches
35. Counted cross-stitch picture, framed, ready to hang, over 100 sq inches -

Additional prize of \$5 given by the Ashgrove Women's Institute to the winner.

36. Item of counted cross stitch, not a picture
37. Table runner
38. Tea cozy, knitted or crocheted, displayed on a teapot
39. Embroidered item
40. Bib apron
41. Pair of oven mitts or Pot holders
42. Fabric placemats, set of two
43. Rug hooking, traditional
44. Tea apron
45. Stuffed toy

LADIES' WEAR

46. Cowl or infinity scarf
47. Any article of machine embroidery
48. Knitted scarf
49. Knitted slippers
50. Fingerless gloves, knitted
51. Knitted vest
52. Shawl
53. Knitted hat, mitts, scarf, or headband, any combination of two

MEN'S WEAR

54. Barbeque apron
55. Knitted gloves
56. Socks, 1 pair, knitted
57. Knitted slippers
58. Knitted scarf

CHILDREN'S WEAR

59. Cape, any media
60. Slippers, knitted
61. Child's animal hat
62. Halloween costume
63. Knitted slippers
64. Carriage cover, knitted, approx. 30" x 35"
65. Carriage cover, crocheted, approx. 30" x 35"
66. Baby's knitted set, jacket and bonnet no ribbons or ties
67. Baby's crocheted set, jacket and bonnet, no ribbons or ties.
68. Child's apron
69. Knitted hat and mitt set



CHRISTMAS CORNER

70. Table runner
71. Christmas cushion
72. Place mats
73. Christmas stocking
74. Christmas ornament made from fabric
75. Knitted or crocheted Christmas ornament
76. Quilted Christmas hanging
77. Crocheted snowflake
78. Christmas hanging towel
79. Christmas tree skirt
80. Angel any media

SPECIAL – COMMUNITY SERVICE CHALLENGE

All items to be retained and donated to Milton District Hospital, Prize

Special 1st - \$10, 2nd - \$8, 3rd - \$5

81. Littlest Angel - preemie sweater, hat & booties
 82. Cuddle Blanket, 30" x 30" crocheted or knitted
 83. Three Toques for newborn, knitted
 84. Adult cotton hat for Cancer Patients, knitted or crocheted
- SPECIAL: \$25 Gift Certificate from "The Flower Mill" to the 1st place winner in Section 84 only.**
85. Child's cancer hat for boy or girl, knitted with soft wool.

HALTON SENIOR CITIZENS' DIVISION (60 years and older)

Prize money in Sections 86-91 will be: 1st - \$5, 2nd - \$4, 3rd - \$3, 4th - \$2.

86. Cotton knitted dish cloths, set of three
87. Quilt Block, not larger than 12" x 12", mounted and not quilted
88. Knitted shawl
89. Fabric shopping bag
90. Crocheted dish cloths, set of three
91. Adult bib

- **Halton Agricultural Society, Homecraft Section Special** offers a \$10 award to the contestant winning the highest score by points in Needlecraft Sections 1-80. **Last three year's winners ineligible.** Score: 1st - 3 points, 2nd - 2 points, 3rd - 1 point.
- **Two Director's Choice Specials - Ribbon:** awarded to the exhibitor deemed most worthy by Directors.

HALTON ORGANIZATIONS

Committee: Donna Parsons 905-854-2362, Marion Snyder.

Theme: "Country Fun for Everyone" - No entry fee

92. Ten articles to be displayed in a 6 ft. space using such items as antiques, baking, needlework, quilting, or crafts. Only three props may be used and not counted as an article.

SPECIAL: \$75 to be given for Best Display, \$50 for the second and \$25 to all other entries.

An additional \$10 is given by the Ashgrove Women's Institute to the best display.

Class 37 - DOMESTIC SCIENCE

Committee: Marion Snyder (905-854-2688), Marilyn Gooding (905-875-6265) Tracy Breckon, Elizabeth Patterson, Catherine Richardson, Stella Rulton, Joy Simpson

NEW RULES: READ DIRECTIONS CAREFULLY. DON'T BE DISQUALIFIED

Rules & Regulations:

- Only one exhibit per section per person
- **IMPORTANT – ALL Entries must be submitted ONLINE via Assist Expo at <https://assistexpo.ca/milton-fall-fair> by Friday September 15, 2023. If you need assistance registering online, please call or visit our office before the deadline date. Late entries are NO LONGER able to be accepted.**
- All Displays and Tagged exhibits accepted in #1 Hall Wed. Sept. 20th at 6:00 p.m. - 9:00 p.m. and Thurs. Sept. 21st at 9:00 a.m. - 11:00 a.m.
- All exhibits must be done by entrant and must remain in hall until Sunday, September 24th.
- Halls close Sunday September 24th at 4:00 p.m. and exhibitors can pick-up articles from 5:00 p.m. - 6:00 p.m.

Prize Money – 1st \$5, 2nd \$4, 3rd \$3, except where stated otherwise. If a class has more than 10 entries, a 4th place prize of \$2 may be given. If a class has more than 15 entries, a 5th prize of \$1, may be given.

YEAST BREADS & BUNS

SUBMIT BAKING ON SMALL PAPER PLATES IN PLASTIC ZIPLOC BAG
Rolls are individual; buns are attached (at least one day old). Please note sizes of pans in each class.

1. 1/2 loaf homemade white bread (22cm x 11cm x 6cm or 8"x4"x3")
2. 1/2 loaf whole wheat bread (22cm x 11cm x 6cm or 8"x4"x3")
3. 1/2 loaf sourdough bread (22cm x 11cm x 6cm or 8"x4"x3")
4. 1 **FULL** loaf Raisin bread made in **Bread Machine**
5. Three tea biscuits
6. Three scones with fruit
7. Three cinnamon rolls, with icing
8. 1 Homemade Soft Pretzel

LOAVES

9. 1/2 pumpkin loaf
10. 1/2 banana loaf
11. 1/2 lemon loaf
12. 1/2 chocolate zucchini loaf

MUFFINS (no paper baking cups)

13. Three morning glory muffins
14. Three chocolate chip muffins
15. Three apple muffins
16. Three muffins any other variety not listed

COOKIES

17. Three ginger snap cookies.
18. Three chocolate chip cookies
19. Three peanut butter cookies
20. Three oatmeal raisin cookies
21. Three homemade cookies (not listed elsewhere), labeled
22. Three chocolate brownies, iced, each 2" square
23. Three unbaked squares, each 2" square, labeled

BAKING SPECIALS (no mixes to be used unless specified)

1st PRIZE SPECIALS WILL BE REMOVED BY THE SPONSOR AFTER JUDGING!

SUBMIT BAKING ON SMALL PAPER PLATES IN PLASTIC ZIPLOC BAG.

In sections 24-30, regular prize money is paid in addition to the Specials offered.

24. **8" Pan of Date Squares.** Special of \$15 given by **Marilyn Gooding. First prize to be retained.**
25. **Queen Elizabeth Cake.** Special of \$15 given by **Ross Runnalls. First prize to be retained.**
26. **8" round or square Coffee Cake.** Special of \$15 given by **Marion Snyder. First prize to be retained**
27. **9" Pumpkin Pie.** Special of \$15 given by **Bruce Richardson. First prize to be retained.**
28. **9" Peach Pie, double crust.** Special of \$15 given by **Bruce Richardson. First prize to be retained.**
29. **9" Apple Pie, double crust.** Special of \$15 given by **Caroline Patterson. First prize to be retained.**
30. **9" Any fruit pie not listed, double crust.** Special of \$15 given by **Ryan Richardson. First prize to be retained.**



31. O.A.A.S. Butter Tart Competition - Exhibitors are asked to exhibit 3 full size butter tarts. No nuts, no fruit, no raisins, no pecans. No paper baking cups. Tarts must be on a clean paper plate inside a clear plastic bag. Entry must be made solely by the person entering the competition including the pastry. Winner will represent Milton Fair at the District Competition in October 2023.

Prize money in Section 31 is 1st - \$15, 2nd - \$10 and 3rd - \$8.

District Competition (October 2023)

- A total of 6 tarts will be required to be shown. Tarts must be on a clean, sturdy plate (no paper plates) inside of a clear plastic bag with the exhibitor's name, mailing address and fair represented.
- The size of the tarts must be full size tarts. (no mini or bite size tarts) and must not contain fruit or nuts (ie. no raisins, no pecans).
- If the exhibitor has won at more than one fair, the one closest to the exhibitor's home address is the agricultural society from which the entry will be sent to the district competition. An exhibitor may only enter into one district completion.
- Prize money to be paid by the District. First place will represent District 5 at the Provincial Competition.

Provincial Competition (February 2024)

- The entrant must have won the District Competition to be eligible to enter the Ontario Association of Agricultural Societies Competition at the convention. In the case where the District winner is unable to send an entry to the convention then the 2nd prize district winner will be eligible to enter.
- A total of 6 tarts will be required to be shown. Tarts must be on a clean, sturdy plate (no paper plates) inside of a clear plastic bag with the exhibitor's name, mailing address and district represented.
- The size of the tarts must be full size tarts. (no mini or bite size tarts) and must not contain fruit or nuts (ie. no raisins, no pecans).
- 1st and 2nd place entries will not be returned to exhibitor but will be placed for auction at the convention.

Provincial Prize Money – 1st \$50.00 2nd - \$30.00 3rd - \$20.00, donated by

Gay Lea Foods Co-Operative

Judging Standard: General Appearance 20; Crust 40; Filling 40.

32. Three butter tarts, with raisins. (no paper baking cups)
33. Three fruit-filled tarts, labeled. (no paper baking cups)
34. Three pumpkin tarts. (no paper baking cups)

CANDY

35. Three pieces Peppermint Bark
36. Three pieces Peanut Brittle
37. Three pieces Chocolate Fudge, each piece 2" square
38. Three pieces Maple Cream Fudge, each piece 2" square
39. Trail Mix, 1 cup displayed in clear plastic container
40. Nuts & Bolts, 1 cup, displayed in clear plastic container
41. Three Homemade Peppermint Patties

CANNED FRUIT

****NO QUART JARS!!! **NO FOOD COLOURING **LABEL AND DATE ALL JAMS, JELLIES, FRUITS AND PICKLES.**

Containers to be opened by judge. Jar seal must not be broken prior. Please no identifying marks on the jars, such as fancy lid covers. Preference given to this year's canning.

CANNED FRUIT

Pint jar (500 ml or 2 cups), sealed, label and date!!

42. Canned pears
43. Canned peaches
44. Canned applesauce
45. Canned plums

JAMS AND JELLIES

Approximately 8 ounces or 250 ml jar, sealed, NO WAX, label and date!!

46. **SPRINGRIDGE FARM SPECIAL:** Cooked Strawberry Jam. Gift Certificates from **Springridge Farm** of \$25, \$20 and \$15.
47. Black Currant Jam
48. Red Currant Jelly
49. Cooked Raspberry Jam
50. Cooked Peach Jam
51. Freezer Strawberry Jam, unsealed
52. Freezer Raspberry Jam, unsealed
53. Diabetic Jam, labeled
54. Grape Jelly
55. Traditional Marmalade
56. Red Pepper Jelly
57. Jam, not listed above, labeled
58. Jelly, not listed above, labeled

PICKLES

****NO QUART JARS!!!** Pint jar or 500 ml jar, sealed, label and date!! No food colouring.

59. **SPECIAL:** Medium Salsa, 1 pint jar. Include recipe. Special of \$10 is given by **Joan Marshall**, in addition to regular prize offered. First prize to be retained.
60. Hot and Spicy Salsa

61. Bread and Butter Pickles
62. Icicle Pickles
63. Dill Pickles, no garlic
64. Dill Pickles, with garlic
65. Pickled Beets
66. Nine day Pickles
67. Any Other Pickled Vegetable, labeled
68. Zucchini Relish
69. Hot Dog Relish
70. Pickled Eggs
71. Chili Sauce
72. Homemade hummus
73. Chutney, labeled

"The Flower Mill" offers a \$25 gift certificate to the exhibitor winning the highest points in Domestic Science. Last year's winner ineligible.



Class 38 - ANTIQUES / COLLECTIBLES

Committee: Sarah Duval, Mary Speck

RULES AND INFORMATION:

1. **IMPORTANT – ALL Entries must be submitted ONLINE via Assist Expo at <https://assistexpo.ca/milton-fall-fair> by Friday September 15, 2023. If you need assistance registering online, please call or visit our office before the deadline date. Late entries are NO LONGER able to be accepted.**
2. All Antique entries to be approximately **50** years old. Condition and age to be considered. Small cracks or flaws will not disqualify.
3. **AMATEURS ONLY** may enter – no dealers.
4. Entry tags to be securely fastened to the article.
5. No article to exceed 10" in any direction unless otherwise stated.
*(Exception)
6. Historical interest and approximate age of entry would be appreciated but is not necessary for a prize.
7. Entries may not be removed until after 5:00 pm on Sunday, September 24th 2023.
8. **Halls close at 6:00 pm.**

Note: We will take the best possible care to safeguard articles but cannot be responsible for articles or accidents to them. Any inquiries should be addressed to the Directors listed.

Disputes: Refer to the front of the book.

Prize Money: 1st - \$5, 2nd - \$4, 3rd - \$3

1. Paper Weight - Farm Themed
2. Horse Bells *
3. Boot Jack *
4. Child's Cast Iron Toy
5. Tin Lunch Box
6. Harmonica
7. Musical Box
8. Woodworking Tool
9. School Photo
10. Child's Story Book
11. Hay Fork Lift *
12. Fishing Lure
13. Calendar - Farm Themed
14. Wooden Knitting Needles
15. Art Pottery Vase
16. Straw Hat
17. Skates
18. Two Man Saw
19. Egg Basket
20. Sap Bucket *
21. Child's Hand Knit Sweater
22. Decoy *
23. Collectibles - 3 on a tray

24. Belt Buckle
25. Toy Train
26. Brownie/Guide/Cub/Scout Memorabilia
27. License Plate
28. Compass
29. Binoculars
30. Agricultural Award

Best in Show – Ribbon, Additional Prize of \$5.00 given by the **Ashgrove Women's Institute** to the exhibitor winning the highest score by points in Class 38.

Score: 1st - 3 points, 2nd - 2 points, 3rd - 1 point.

Judge's Choice - Ribbon



Class 39 - FLOWERS AND PLANTS
Theme: "Country Fun for Everyone"

Committee: Irene Oldford (905-877-1390), Lynn Brody, Connie McMullen,
Diane Patterson

RULES

- **IMPORTANT – ALL Entries must be submitted ONLINE via Assist Expo at <https://assistexpo.ca/milton-fall-fair> by Friday September 15, 2023. If you need assistance registering online, please call or visit our office before the deadline date. Late entries are NO LONGER able to be accepted.**
- Quality of Bloom, length of stem, and quality of foliage to be considered in judging exhibition bloom
- Stems must not be tied or wired
- Prizes awarded on quality and arrangement
- When a specific amount of a certain variety is called for, there must be neither more nor less exhibited
- Any organization may compete as an individual in Sections 1-55 inclusive. Prize money to go to group treasury
- Exhibits must be grown by exhibitor in Sections 1-44 inclusive
- All exhibits must be placed in the hall under the north end of the Grandstand on Wednesday, September 20th between 6:00 pm and 9:00 pm or Thursday, September 21st from **9:00 am - 10:30 am**
- Halls close at 4:30 pm Sunday, September 24th and re-open for pick up of entries from 5:00pm to 6:00pm.
- Judging will be according to Ontario Judging and Exhibiting Standards Publication 34
- Only one exhibit per section – if more are entered – **both will be disqualified**
- Directors are not responsible for loss or damage of exhibits
- **VERY IMPORTANT** - Please read Homecraft Rules and Regulations for Classes 34-49.

CUT FLOWERS

All cut specimens to be exhibited with own foliage attached and in a suitable container, in water, unless otherwise stated. Prize money in Sections 1-44 will be 1st - \$5, 2nd - \$4, 3rd - \$3

1. Annuals in a vase - 3 or more varieties, no gladiolas or dahlias
2. Asters - 5 blooms
3. A branch with berries attached, not over 2 ½ feet (75cm) in length including container
4. Calendula - 5 blooms
5. Chrysanthemums - 3 stems, 1 variety
6. Cleome - 3 stems one variety
7. Cosmos - mixed in a vase
8. Dahlias - 3 blooms, different varieties
9. Dahlia - 1 bloom, 6" (15cm) or more across
10. Dahlias - 3 blooms, one variety and colour, 4" (10cm) and under
11. Dragonwing Begonias – 3 stems, one variety and colour
12. Geranium - Large flowered with foliage, 3 blooms
13. Gladiola - 1 spike

14. Gladiola - 3 spikes
15. Grasses - ornamental, 5 stems of 1 variety, short type, under 60 cm at maturity
16. Grasses – ornamental, collection must include at least 3 varieties, all tall types
17. Hosta Leaves - small, under 6" (15cm) at maturity, 3 leaves, different varieties
18. Hosta Leaves - over 6" (15cm) at maturity, 3 leaves, different varieties
19. Marigolds - African (large) 5 blooms, one variety
20. Marigolds - French (small) 5 blooms, one variety
21. Hydrangea - fresh, 1 bloom, any variety, **not dried**
22. Petunias – singles, in a container that is less than 6" (15cm) in diameter, colours of the Flag of Canada
23. Roses - 3 hybrid teas, any variety
24. Rose - any other, 1 stem
25. Rose - miniature, 1 stem, any colour
26. Rose – exhibited in a glass bowl, floating in water, 1 open bloom only, no foliage
27. Rose - most fragrant, 1 bloom
28. Salvia – blue, 5 stems
29. Snapdragon - tall, 3 spikes, 1 variety
30. Herbs - a collection of at least 3 or more different varieties, 1 stem each, name to be on the stem of each variety
31. Sunflower - small, ANNUAL - 3 blooms, any colour
32. Sunflower - yellow, PERENNIAL, 3 stems, single or double
33. Zinnias - giant cactus type in basket
34. Zinnias - large, non-cactus, 5 blooms
35. Zinnias - small not over 2" (5cm), 5 blooms
36. One stem of a flowering vine in bloom
37. Any perennial flower in bloom, not listed, 1 stem, named
38. Three varieties of cut flowers, not listed, 2 stems of each, name to be on the stem of each variety
39. A bouquet of perennials

POTTED PLANTS - To be grown by the exhibitor for a minimum of three months, potted

40. African Violet, solid dark purple bloom, single crown.
41. African Violet, any other colour, single crown.
42. Succulents - collection of 3 or more different varieties, all growing together in one shallow container or dish garden, container maximum 14" (35.5cm) in diameter
43. Collection of 3 houseplants, any variety, must be grown in separate pots, on a tray to display
44. One coleus plant grown in pot under 8" (20cm) in diameter

FLOWERS - DECORATIVE SECTION

Theme "Country Fun for Everyone"

- **Artificial Flowers and Material not to be used unless otherwise stated**
- **Natural material includes wood, rocks, moss, berries, anything fresh or dried. NO SOIL. No protected or endangered native plants allowed**
- **Design must include some fresh plant material. Prize money in Sections 45-55 will be 1st - \$5, 2nd - \$4, 3rd - \$3.**

Class 41 - ART AND CRAFTS

Committee: Emily Gooding, Leslie Fitch

Note: Judges are authorized by the Directors of this Society to discard all soiled, defaced, or old work and are instructed to award prizes to new and up-to-date work. The decision of the judge will be final and the judge may withhold any award if, in their opinion, the exhibit is not worthy.

IMPORTANT – ALL Entries must be submitted ONLINE via Assist Expo at <https://assistexpo.ca/milton-fall-fair> by Friday September 15, 2023. If you need assistance registering online, please call or visit our office before the deadline date. Late entries are NO LONGER able to be accepted.

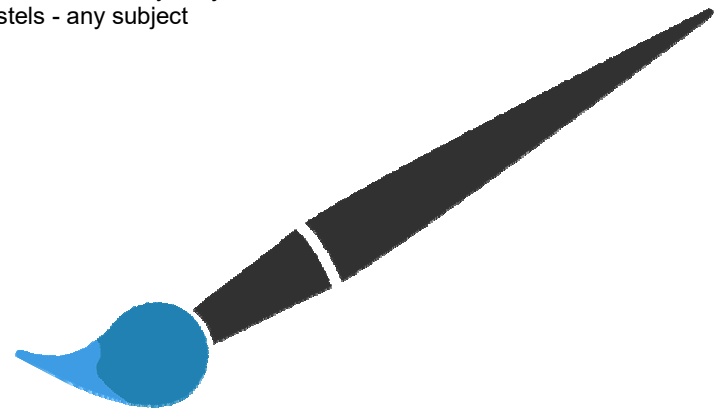
All exhibits in this class must not have been exhibited at a previous Milton Fair and must be the bona fide work of the exhibitor. Any Group Organization may compete as an individual in this class. Prize money to go to Group Treasurer.

Entry tags must be securely fastened to the entry. **Entries must include a sample of materials used where applicable or entry may be disqualified. Prize money will be:** 1st - \$5, 2nd - \$4, 3rd - \$3.

ART

RULES:

- All Exhibits must be framed, with the exception of stretched canvas or will be disqualified
 - Maximum size for entries is 20" X 24" (50 cm X 60 cm) including frame
 - Name on the artwork must be covered for judging. (tape, paper, etc.)
 - Entry tags to be securely attached to exhibits
 - Judges may withhold an award if, in their opinion, an exhibit lacks merit
 - The committee reserves the right to disqualify and refrain from hanging any piece of artwork which, in their opinion, appears to be based on pornography
 - No mechanical reproductions
1. Oil/Acrylic - on stretched canvas - any subject
maximum size 20" X 24"*
 2. Oil/Acrylic - framed - any subject
 3. Water Colour - any subject
 4. Pastels - any subject



45. "Little Blooms" - A miniature design, of fresh flowers, not to exceed 5" or 12cm in any direction including container. Container should not exceed 1 ½" (3.5cm) in height or width for good proportion
46. "Harvest" - a design in a ½ bushel basket
47. A design of your choice
48. "Haystack" - a horizontal design incorporating hay
49. "Golden Countryside" - a design, using golden rod and autumn asters
50. "Cattails" – a water viewing design in a shallow container 1/2 to 2/3 of surface showing water (no soil)

SPECIALS (No artificial flowers or foliage allowed)

51. "Garden Splendors"- A design of flowers, and root vegetables, accessories allowed. **Extra prize** of \$5 given by **Irene Oldford** to the first place winner
52. "Thanksgiving Dinner" - a centerpiece, accessories allowed, and autumn daisies. **Extra prize** of \$5 given by **Diane Patterson** to first place winner
53. "The Last Perfect Rose of Summer" - **Extra prize** of \$10 given in memory of **Evelyn Oates** by the **Flower Committee** to the first place winner
54. A design in a wine bottle.
55. "Farmer's Delight" - A mass design for a space 30" x 24" (75cm x 60 cm) less than 30" (75cm) high, accessories allowed. **Extra prizes** given by **Milton Horticultural Society** 1st - \$25, 2nd - \$15, 3rd - \$10

SHOW SPECIAL - MOST POINTS IN DECORATIVE SECTION. Special prize of a \$25 gift certificate given by **The Flower Mill**.

SHOW SPECIAL - BEST DESIGN IN DECORATIVE SECTION. Special prize of \$25 given by **DiGirolamo's Greenhouse**.

SHOW SPECIAL - BEST ROSE EXHIBIT OF THE SHOW. Special prize of \$5 given by the **Ashgrove Women's Institute** to the winner.

"LOIS PARKER MEMORIAL AWARD" - MOST POINTS IN CUT FLOWERS. **Special prize** of \$10 given by her family.

Points in Class 39 will be totaled for Champion **Rosette. Halton Agricultural Society Homecraft Section** offers \$10.00 to the exhibitor winning the highest score by points in Flowers and Plant Class.

Score: 1st - 3 points, 2nd - 2 points, 3rd - 1 point.

Last year's winner ineligible.

**** YOUTH FLOWER SPECIAL ** - SEE CLASS 44**



38. Best Handmade Sign - maximum 12" X 12"

CRAFTS

5. Seed Art - any theme (8 ½" X 11")
6. Handmade Jewelry (any medium) - necklace and earrings
7. Hair accessory (any medium)
8. Quick Craft - a craft from a kit that can be completed in a weekend - please include package
9. Paper Craft (e.g. quilling, origami, etc.)
10. Any Hardware Craft - made with tradesman's materials - **Additional \$5.00 prize donated by GOODING ELECTRIC - Special**
11. String Art
12. Create a garden ornament using clay pots - height not to exceed 30"
13. "Celebrate the Year of The Rabbit" - any medium
14. Article of Painted Fabric
15. Beachcomber - make something using items found at the beach (or on a nature walk)
16. **MEN ONLY** - Any craft not listed. Judged on level of appeal, difficulty and quality of workmanship - please include name of craft - **Additional \$5.00 prize donated by GOODING ELECTRIC - Special**
17. Decorate a cell phone case, any medium
18. Garden stepping stone, maximum size 18"
19. Handmade case for eye glasses - any medium
20. Hanging Garden Ornament - any medium
21. Handmade Greeting Card, any medium include inside verse and envelope - Not Christmas
22. Picture using pressed flowers - framed - maximum size 8" X 10"
23. Decorate a memory box - any medium
24. Three handmade bazaar items - different techniques, on a tray
25. Recycle something useless into something useful - **Identify Items Used**
26. Recycle something useless into something decorative - **Identify Items Used**
27. Create a fairy garden, maximum size 18"
28. Metal Art- **Additional \$5.00 prize donated by LAJY WELDING - Special**
29. Craft not listed in any of the categories above, **under 12"**, no knitting or crocheting. Judged on level of appeal, difficulty and quality of workmanship - **include Name of Craft**
30. Craft not listed in any of the categories above, **over 12"**, no knitting or crocheting. Judged on level of appeal, difficulty and quality of workmanship - **include Name of Craft**
31. "The Procrastinator": 90-99% almost complete craft
32. Floating Teacup

FAIR THEME - "Country Fun for Everyone"

The following items are to be made incorporating designs depicting the fair theme:

33. Painted Rock depicting fair theme – maximum size 12"
34. Fridge Magnet - any medium
35. Table Centerpiece - Fair Theme
36. Collage depicting fair theme - no larger than 18" x 18" - Not Computer Generated
37. Front porch or garden decoration - maximum base size 14"

CHRISTMAS CORNER

39. Handmade Christmas Wreath using non-traditional materials (i.e. not greenery based) - any shape
40. Item made from recycled Christmas cards
41. Handmade Christmas Card, any medium, including an inside verse and an envelope - **Not Computer Generated**
42. Decorated Handmade Christmas Gift Decoration with Gift Tag, any medium
43. Christmas Table Centrepiece. **Additional \$5.00 prize donated by Ashgrove Women's Institute**
44. Create a Christmas Candle Holder, any medium - include candle
45. Christmas Tree Ornament, any medium
46. Create a Christmas snow globe
47. **SPECIAL - Community Service Challenge** - A pair of handmade mittens for lady or child. **Gift certificates donated by Troy's Diner** for 1st - \$5, 2nd - \$5, 3rd - \$5. **All entries will be retained and donated to Halton Women's Place**
48. **SPECIAL - Community Service Challenge** - A Handmade Scarf. **Gift certificates donated by Troy's Diner** for 1st - \$5, 2nd - \$5, 3rd - \$5. **All entries will be retained and donated to Halton Women's Place**
49. **BERNARDIN SPECIAL** - Best decorative or functional homemade craft using a **Bernardin jar** and/or 2-piece lid. ***Must be Bernardin Brand*** - **\$20 Gift Certificate** awarded to the winner

Halton Agricultural Society, Homecraft Section - Offers a special \$10 award to the exhibitor winning the highest score by points in Arts and Crafts Class. Score: 1st - 3 points, 2nd - 2 points, 3rd - 1 point. **Last year's winner ineligible.**

Best in Show – Ribbon, additional prize of \$5.00 donated by **Emily Gooding.**



**Class 42
CREATIVE PHOTOGRAPHY**

FAIR THEME: Country Fun for Everyone!

Committee: Katie Patterson (905-876-5616), Heather Mayes, Jason Little, Dave Mayes, Cecil Patterson

RULES - PLEASE READ INSTRUCTIONS CAREFULLY:

ALL PHOTOS MUST BE mounted on black Bristol board with 1" border (CONSTRUCTION PAPER, MATTING AND WHITE BORDER AROUND PHOTOS WILL NOT BE ACCEPTED). Exhibitor's entry tag to be securely stapled AT TOP RIGHT SIDE EDGE of border. No elastic bands or yarn. Suggestion: **rubber cement should be used for secure mounting. DO NOT USE CONTACT CEMENT ON PHOTOS AS IT WILL DAMAGE PHOTOS. NO PHOTO MOUNTING CORNERS.**

IMPORTANT – ALL Entries must be submitted ONLINE via Assist Expo at <https://assistexpo.ca/milton-fall-fair> by Friday September 15, 2023. If you need assistance registering online, please call or visit our office before the deadline date. Late entries are NO LONGER able to be accepted.

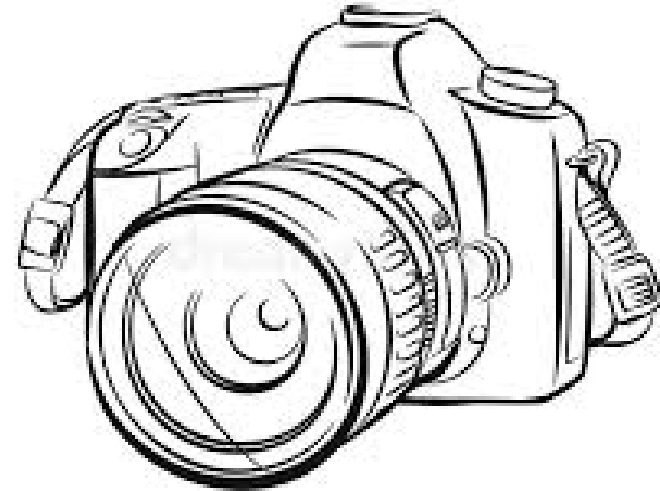
- All work to be the bonafide work of exhibitor.
- Photos to be current. All entries in this class must not have been exhibited at a previous Milton Fair.
- Exhibitors in this class must be amateurs. **No professional photography allowed.**
- Choice of colour or black and white, unless stated.
- No picture larger than 5" x 7", unless stated.
- One submission per section.
- Digital allowed in all classes.
- No Polaroid photos.
- No computer enhancement allowed.
- One print per exhibitor, per section, unless stated otherwise.
- Let your imagination take over, remember to have fun.

Prize Money: 1st \$5, 2nd \$4, 3rd \$3

PLEASE MAKE SURE YOU SELECT THE CORRECT SECTION NUMBER FOR YOUR EXHIBIT

1. Young Artists at work
2. Ice Formations
3. Abandoned Building(s) (black and white)
4. Something Purple
5. Holding Hands
6. Sunrise or Sunset
7. Farm Equipment working the field - **An additional \$5 to first place winner, donated by the Halton Plowman's Association**

8. Moving Water
9. Action Shot
10. Multiple Generations
11. Photo from Above
12. Candid Shot
13. Tracks in snow and/or mud
14. Plowing Match held in 2023 - **An additional \$5 to first place winner, donated by the Halton Plowman's Association**
15. Flowers
16. Rocky Landscape
17. Antique Tractor(s) - **An additional \$5 to first place winner, donated by the Halton Plowman's Association**
18. Scene(s) from 2019 or 2022 Milton Fall Fair Demolition Derby
19. Photographers Choice: photo size 8x11
20. Fair Theme: Country Fun for Everyone!





CHILDREN'S PRIZE LIST

Classes 43-49



Class 43 PHOTOGRAPHY FOR SCHOOL STUDENTS

FAIR THEME: Country Fun for Everyone!

Committee: Katie Patterson (905-876-5616), Heather Mayes, Jason Little, Dave Mayes, Cecil Patterson

RULES - PLEASE READ INSTRUCTIONS CAREFULLY:

ALL PHOTOS MUST BE mounted on black Bristol board with 1" border (CONSTRUCTION PAPER, MATTING AND WHITE BORDER AROUND PHOTOS WILL NOT BE ACCEPTED). Exhibitor's entry tag to be securely stapled AT TOP RIGHT SIDE EDGE of border. No elastic bands or yarn. Suggestion: **rubber cement** should be used for secure mounting. **DO NOT USE CONTACT CEMENT ON PHOTOS AS IT WILL DAMAGE PHOTOS. NO PHOTO MOUNTING CORNERS.**

IMPORTANT – ALL Entries must be submitted ONLINE via Assist Expo at <https://assistexpo.ca/milton-fall-fair> by Friday September 15, 2023. If you need assistance registering online, please call or visit our office before the deadline date. Late entries are NO LONGER able to be accepted.

- All work to be the **bonafide** work of exhibitor.
- Photos to be current. All entries in this class must not have been exhibited at a previous Milton Fair.
- Exhibitors in this class must be amateurs. **No professional photography allowed.**
- Choice of colour or black and white, unless stated.
- No picture larger than 5" x 7", unless stated.
- One submission per section.
- Digital allowed in all classes.
- No Polaroid photos.
- No computer enhancement allowed.
- One print per exhibitor, per section, unless stated.
- Students are welcome to enter Class 42 Creative Photography: Open to All Ages

Prize money will be: 1st \$4, 2nd \$3, 3rd \$2.

NOTE: Children's prize money and exhibits are to be picked up on **Sunday, September 24th 2023 at 5:00 p.m.** upon presentation of stamped exhibitor pass.

PHOTOGRAPHY- open to all school children Ages 8-16

1. Wildlife
2. Something Frozen
3. Something Blue
4. Helping Hands
5. Close-up Texture (black and white)
6. Sunrise or Sunset

- 7. Animals in motion - **An additional \$5 to first place winner, donated by the Halton 4-H Photography Club**
- 8. Farm Life
- 9. Field of Crops
- 10. Scene(s) from the 2022 Milton Fall Fair
- 11. Photographers Choice
- 12. Fair Theme: Country Fun for Everyone!



**Class 44 - YOUTH FLOWER SPECIAL
Youth Flower Special up to 16 Years**

Committee: Irene Oldford (905-877-1390)

RULES:

- **IMPORTANT – ALL Entries must be submitted ONLINE via Assist Expo at <https://assistexpo.ca/milton-fall-fair> by Friday September 15, 2023. If you need assistance registering online, please call or visit our office before the deadline date. Late entries are NO LONGER able to be accepted.**
- No Entry Fee
- Only one exhibit, per section, per person
- To be exhibited with flowers under the Grandstand
- No artificial flowers or leaves permitted
- All other rules from Children’s Prize List Class 45 apply

NOTE: Children’s prize money and exhibits are to be picked up on Sunday, September 24th, 2023 at 5:00 pm upon presentation of stamped exhibitor pass

Prize money in Section 44 will be 1st - \$5, 2nd - \$4, 3rd - \$3, 4th - \$2, 5th - \$1.
Additional Special Prizes donated by **Valley Crest Farms** and **Irene Oldford**
1st - \$12, 2nd - \$8, 3rd - \$5.

- 1. "From the Roadside" - a design
- 2. "Harvest Time" – a large design

**Class 45
CHILDREN'S PRIZE LIST**

2023 Milton Fall Fair Theme is: Country Fun For Everyone

Committee: Donna Bradley, Julia Snow, Marion McPhail, Kay Smoke, Penny Patterson, Gloria Brown, Carolyn Doherty, Bea Featherstone, Janice Lamers, Betty Royce, Kathy Featherstone, Sarah Galbraith, Katie Snow, Gail Strong, Judy Rath

For information in this class: Donna Bradley 905-878-6439, Julia Snow 905-878-2223, Penny Patterson 905-878-5816

**Read directions carefully. Don't be disqualified.
ALL ENTRIES MUST BE SUBMITTED ONLINE**

Rules & Regulations: No Entry Fee. Only one exhibit per section, per person.

Please complete all entry forms for exhibits early. The office will be open Monday to Friday starting Monday September 11, 2023 from 9:00am – 4:00pm daily.

IMPORTANT – ALL Entries must be submitted ONLINE via Assist Expo at <https://assistexpo.ca/milton-fall-fair> by Friday September 15, 2023. If you need assistance registering online, please call or visit our office before the deadline date. Late entries are NO LONGER able to be accepted.

- **Entries MUST be submitted online prior to Friday Sept. 15th at 4:00pm to receive an entry number.**
 - If you need assistance you can contact the office for help via E-mail miltonfair@cogeco.net or phone: 905-878-5689
- **Pick up your entry tags at the office ahead of time.** If not, they will be available Wed. Sept 20th until 8:30pm or Thurs Sept 21st until 10am.
- **Bring your exhibits (with attached entry tag) to under the Grandstand on Wed. Sept 20th from 3-9pm or Thurs. Sept 21st from 9-10:30am.**
- Hobbies, crafts and baking must be work of individual exhibitors.
- All exhibits must remain in the hall until closing on Sunday Sept. 24th, at 4:30pm.
- New work will be given priority over old.
- Exhibits may be disqualified at the judges' discretion.
- Directors are not responsible for loss or damage of exhibits.

NOTE: CHILDREN'S PRIZE MONEY AND EXHIBITS are to be picked up Sunday Sept. 24th from 5 - 6pm upon presentation of stamped exhibitor pass. Please ensure you have made arrangements for pick up. Any exhibit not picked up by 6pm sharp will be disposed of.

PRIZE MONEY in sections 1 – 79: 1st \$2.00, 2nd - \$1.75, 3rd - \$1.50, 4th - \$1.25, 5th - \$1.00. In sections 80-93: 1st - \$5.00, 2nd - \$4.00, 3rd - \$3.00, unless stated otherwise. Special prizes may be awarded in some classes.

SCHOOL DISPLAYS

**Read directions carefully. Don't be disqualified.
ALL ENTRIES MUST BE SUBMITTED ONLINE**

**Theme for all 2023 School Displays is: Country Fun For Everyone
PLEASE NOTE DISPLAY DIMENSIONS: 76cm deep x 1m wide and no higher than 1m.**

Displays in A to E receive \$15.00.

- A. Display of work done by Trillium School.
- B. Display of work done by Ernest C. Drury School for Hearing-Impaired.
- C. Display of work by Nursery School or Daycare Centre.
- D. Display of work done by High Schools in Halton.
- E. Display of school work done by Kindergarten to Grade 8.

SPECIAL: \$10 Special for best display of school work in Section E.

NOTE: EXHIBITS are to be picked up Sunday Sept. 24th from 5 - 6pm. Please ensure you have made arrangements for pick up. Any exhibit not picked up by 6pm sharp will be disposed of.

AGES 5 YEARS AND UNDER

**Read directions carefully. Don't be disqualified.
ALL ENTRIES MUST BE SUBMITTED ONLINE**

FOOD

To be displayed on a 15cm. disposable plate (supplied by fairboard at time of delivery).

1. A marshmallow animal. No taller than 12cm.
2. Decorate a cookie with a funny face. No taller than 12cm.
3. Decorate a piece of toast. No taller than 12cm.

PENMANSHIP

4. Print your first name - capital or small lettering – mounted. 10cm x 30cm max. Judged on penmanship, not mounting.

HOBBIES AND CRAFTS

5. Decorate a pinecone as a farmer – pinecone must fit in your hand.
6. Draw a picture of your favourite farm animal. 30cm x 30cm max.
7. Make a pasta necklace.
8. Make a sticker collection of flowers on paper. 30cm x 30cm max
9. Make a clothes pin/peg butterfly.
10. Paint / decorate a small uncarved mini pumpkin.
11. Make a picture of an animal using your handprint(s) and tell us it's name. 30cm x 30cm max
12. Draw a picture of a sunflower. 30cm x 30cm max
13. Make a scarecrow face on a paper plate.

14. Using a toilet paper roll make a rabbit.
15. Make a bell. Any medium 30cm x 30cm max
16. Colour a picture provided by Troy's Diner.
17. Any craft not listed. No LEGO or models please.
18. Six treasures from a walk (eg. stones, pinecones, leaves) glued on a sturdy surface (eg plate, cardboard) 30cm x 30cm max

AGES 6 & 7 YEARS

**Read directions carefully. Don't be disqualified.
ALL ENTRIES MUST BE SUBMITTED ONLINE**

FOOD

To be displayed on a 15cm. disposable plate (supplied by fairboard at time of delivery)

19. A marshmallow animal. No taller than 12cm.
20. Decorate a cookie with a funny face. No taller than 12cm.
21. Make a rabbit using a potatoe as the body. No taller than 12cm.

PENMANSHIP

22. Print & mount. No larger than 30cm x 30cm. Judged on penmanship, not mounting.

To the Farm

Horses, donkeys, cows that moo,
Chickens, kittens, piglets too,
Fish that swim down in the pond,
Ducklings quacking all day long.
All these animals you can see
If you go to the farm with me.

Author Unknown

HOBBIES AND CRAFTS

23. Make 3 flowers out of an egg carton.
24. Make and decorate a cowboy boot. 30cm x 30cm max.
25. Decorate a pair of sunglasses.
26. Paint / decorate a small uncarved mini pumpkin.
27. Make a picture using your finger prints. 30cm x 30cm max.
28. A painted rock. Must fit in your hand.
29. Make a sun catcher. Any medium.
30. Make a wreath from pipe cleaners.
31. Make a 'law enforcement' badge.
32. Decorate a headband.
33. Make a collage showing us your idea of Country Fun. 30cm x 30cm max.
No background paper to show on the front.
34. Decorate a paper bag (lunch size) as a farm animal with a tail.
35. Colour a picture provided by Troy's Diner.

36. Make a picture of a campfire using your hand print(s). 30cm x 30cm max.
37. Make a party hat. Any medium.
38. Any craft not listed. No LEGO or models please.
39. Make a tractor. Any medium. 30cm x 30cm max

AGES 8 & 9 YEARS

**Read directions carefully. Don't be disqualified.
ALL ENTRIES MUST BE SUBMITTED ONLINE**

FOOD

*To be displayed on a 15cm disposable plate (supplied by fairboard at time of delivery).

40. Using cereal, make a frog. No taller than 12cm. Will be judged on appearance
41. 2 cup cakes, decorated as 2 animals. No taller than 12cm. Will be judged on appearance
42. 3 baked cookies (not chocolate chip). Must include recipe. Will be judged on taste and appearance

SEE SPECIAL NUMBER 93. OAAS SPECIAL - Chocolate Chip Cookie

PENMANSHIP

43. Print and mount no larger than 30cm x 30cm. Judged on penmanship, not mounting.

Listen To The MUSTN'TS

Listen to the MUSTN'TS, child,
Listen to the DON'TS
Listen to the SHOULDN'TS
The IMPOSSIBLES, the WONT'S
Listen to the NEVER HAVES
Then listen close to me-
Anything can happen, child,
ANYTHING can be.

Author: Shel Silverstein

HOBBIES AND CRAFTS

44. Make a rabbit out of recycled items.
45. Draw a picture and using yarn/string fill in areas of the picture. 30cm x 30cm max.
46. Make a book mark.
47. Make a key chain.
48. Make a birdfeeder using recycled items.
49. Make a dot art picture using different coloured dots. 30cm x 30cm max
50. Colour a picture provided by Troy's Diner.
51. Make a collage showing us your idea of Country Fun. 30cm x 30cm max.
No background paper to show on the front.

52. Make a sunflower using (seeds, beans, rice) glued on paper. 30cm x 30cm max
53. Paint a rock. Rock to be no larger than your hand.
54. Make a wind chime. Any medium.
55. Make a toilet paper roll rocket.
56. Any other craft not listed. No LEGO or models please.
57. Make a tractor. Any medium. 30cm x 30cm max.

AGES 10, 11 AND 12 YEARS

**Read directions carefully. Don't be disqualified.
ALL ENTRIES MUST BE SUBMITTED ONLINE**

FOOD

To be displayed on a 15cm disposable plate (supplied by fairboard at time of delivery).

58. 3 squares. Must include recipe. Will be judged on taste and appearance.
59. 3 baked cookies (not chocolate chip). Must include recipe. Will be judged on taste and appearance.
60. 3 brownies. Must include recipe. Will be judged on taste and appearance.
61. Bake a (maximum 1 layer 9") cake. Decorate as the 2023 Milton fair theme. Please bring on a sturdy disposable base (no glass). Will be judged on taste and appearance.

SEE SPECIAL NUMBER 93. OAAS SPECIAL - Chocolate Chip Cookie

PENMANSHIP

62. Cursive write and mount no larger than 30cm x 30cm. Will also be judged on context not mounting.

Child's Poem

I'd like a little farm
with a house that's painted blue,
with a lively little terrier
and a kitty cat or two.

I'd build a little barn
to keep my gentle cows,
outside I'd build a pig-pen
for piglets and for sows.

I'd plant a little orchard
with apple and with plum
and all the birds would praise
their green kingdom.

Author: Miriam Waddington

HOBBIES AND CRAFTS

63. Make a wind chime. Must be ready to be hung.
64. Paint a pattern on a rock. Must fit in your hand.
65. Article of wood.
66. Article of needlework.
67. Article of sewing.
68. Decorate a T-shirt.
69. Create an invitation for a special event. No computer art.
70. Paint / decorate an uncarved mini pumpkin.
71. Make a birdfeeder with recycled items.
72. Paint / Decorate a garden pot. 30cm x 30cm x 30cm max
73. Make an origami farm animal.
74. Artwork created with your first name (do not use your last name) using any material. (eg paper clips, yarn, buttons, seeds) No computer art. 30cm x 30cm max
75. Make a collage showing us your idea of Country Fun. 30cm x 30cm max. No background paper to show on the front.
76. Make a poster promoting kindness. 8 ½" x 14" max , no computer art.
77. Make a collar for a pet using any craft material. (eg. beaded, braided, sewn)
78. Any other craft not listed. No LEGO or models please.
79. Design a logo for your "own sport team". 30cm x 30cm max.

AGES 13, 14 AND 15 YEARS

**Read directions carefully. Don't be disqualified.
ALL ENTRIES MUST BE SUBMITTED ONLINE**

Prize money in sections 80 - 93: 1st-\$5.00, 2nd-\$4.00, 3rd-\$3.00 unless stated otherwise. Special prizes may be awarded in some classes.

FOOD

To be displayed on a 15cm disposable plate (supplied by fairboard at time of delivery).

80. 3 pieces of fudge. Must include recipe. Will be judged on taste and appearance.
81. 3 squares. Must include recipe. Will be judged on taste and appearance.
82. Bake a (maximum 1 layer 9") cake. Decorate as the 2023 Milton Fair theme. Please bring on a sturdy disposable base (no glass). Will be judged on taste and appearance.

SEE SPECIAL NUMBER 93. OAAS SPECIAL - Chocolate Chip Cookie

HOBBIES AND CRAFTS

83. Any article of wood.
84. Any article of needlework.
85. Any article of sewing.
86. Make a poster promoting kindness. 8 ½" x 14" max, no computer art.
87. Using 1 bar of soap, make a soap carving.
88. Upcycle a piece of clothing (no undergarments permitted). Tell us what it was originally.
89. Make a picture using any medium (pencil, paint, etc). 30cm x 30cm max
90. Make a 'Survival Immunity Idol'. Any medium.
91. Any other craft not listed. No LEGO, no models or ceramics please.
92. Write new song lyrics based on the fair theme "Country Fun for Everyone" using the tune Twinkle Twinkle Little Star or Row Row Row Your Boat. Name which song tune you chose.

O.A.A.S CHILDREN'S SPECIAL

93. PLAIN CHOCOLATE CHIP COOKIE COMPETITION (no nuts)

Competition is open to youth up to age 15 years (as of December 31 of current year) of member societies of the OAAS.

- 8 cookies to be displayed on a firm, disposable plate inside a clear plastic bag.
- No larger than 3"(6.75cm) and no smaller than 2" (5cm)
- Judging criteria: general appearance 25 points, internal appearance and texture 25 points, flavour 50 points

The winner from each fair will be eligible to enter at the *District competition in October 2023*. If a winner at the District competition, than will be eligible to enter at the *Provincial competition in February 2024*.

Homecraft Special – an additional \$5.00 to the first prize winner

Class 46 - INDIVIDUALS WITH SPECIAL NEEDS

Theme: "Country Fun for Everyone"

Committee: Cathy Gasteiger (416-771-8443), Debbie Cragg

**Read directions carefully. Don't be disqualified.
ALL ENTRIES MUST BE SUBMITTED ONLINE**

RULES & REGULATIONS:

No Entry Fee • Only one exhibit per section, per person

1. **IMPORTANT – ALL Entries must be submitted ONLINE via Assist Expo at <https://assistexpo.ca/milton-fall-fair>** by Friday September 15, 2023. If you need assistance registering online, please call or visit our office before the deadline date. Late entries are NO LONGER able to be accepted.
2. **Pick up your entry tags.** They will be available at the office until Wednesday, September 20th at 5:00 pm and under the Grandstand from 5:15 pm - 9:00 pm.
3. **Bring your exhibits (with attached entry tag)** to under the Grandstand on Wednesday, September 20th from 3:00 pm - 9:00 pm or Thursday, September 21st 9:00 am - 10:30 am.

NO EXCEPTIONS - EXHIBIT SPACE IS LIMITED

- Hobbies, crafts and baking must be work of individual exhibitors
- All exhibits must remain in the hall until closing on Sunday, September 24th at 4:30 pm.
- New work will be given priority over old. Exhibits may be disqualified at the judges' discretion
- Directors are not responsible for loss or damage of exhibits

NOTE: CHILDREN'S PRIZE MONEY AND EXHIBITS are to be picked up Sunday, September 24th at 5:00 pm upon presentation of stamped exhibitor pass. Any exhibit not picked up will be disposed of.

Prize Money – 1st - \$2, 2nd - \$1.75, 3rd - \$1.50, 4th - \$1.25, 5th - \$1.

ELEMENTARY YOUTHS (5-13 years old)

Arts and crafts

1. Create a mason jar/tin can pencil holder
2. Create a wind chime
3. Create a farmer or scarecrow from a wooden spoon
4. Make a wildflower using an egg carton
5. Create a finger painting of the countryside (8 ½ by 11 paper)
6. Make an animal out of Playdough (farm or local wildlife)
7. Create a collage depicting 'Life on the Farm' (8 ½ by 11 paper)
8. Make a tractor from recycled materials (e.g., cereal box, tins, water bottles etc.)
9. Decorate a mug for your teacher
10. Create a piece of yarn art of a subject/scene of your choice (8 ½ by 11 paper)

Baking

MUST fit on 6" or 15 cm disposable plate (supplied by Fair board at time of delivery). 3 Cookies, 2 Muffins, 2 Cupcakes.

11. 3 Chocolate chip cookies
12. 2 Oatmeal muffins
13. 2 Cupcakes

SECONDARY YOUTHS (14-20 years old)

Arts and crafts

14. Create a mason jar/tin can pencil holder
15. Create a wind chime
16. Create a farmer or scarecrow from a wooden spoon
17. Make a wildflower using an egg carton
18. Create a finger painting of the countryside (8 ½ by 11 paper)
19. Make an animal out of Playdough (farm or local wildlife)
20. Create a collage depicting 'Life on the Farm' (8 ½ by 11 paper)
21. Make a tractor from recycled materials (e.g., cereal box, tins, water bottles etc.)
22. Decorate a mug for your teacher
23. Create a piece of yarn art of a subject/scene of your choice (8 ½ by 11 paper)

Baking

MUST fit on 6" or 15cm disposable plate (supplied by Fair board at time of delivery). 3 Cookies, 2 Muffins, 2 Cupcakes.

24. 3 Chocolate chip cookies
25. 2 Oatmeal muffins
26. 2 Cupcakes

ADULT (21+ years old)

Arts and crafts

27. Create a mason jar/tin can pencil holder
28. Create a wind chime
29. Create a farmer or scarecrow from a wooden spoon
30. Make a wildflower using an egg carton
31. Create a finger painting of the countryside (8 ½ by 11 paper)
32. Make an animal out of Playdough (farm or local wildlife)
33. Create a collage depicting 'Life on the Farm' (8 ½ by 11 paper)
34. Make a tractor from recycled materials (e.g., cereal box, tins, water bottles etc.)
35. Decorate a mug for your teacher
36. Create a piece of yarn art of a subject/scene of your choice (8 ½ by 11 paper)
37. Create and decorate a dreamcatcher
38. Create a tissue box monster
39. Create a button or magnet for the 2023 Milton Fall Fair
40. Create a paper lantern

Baking

MUST fit on 6" or 15cm disposable plate (supplied by Fair board at time of delivery). 3 Cookies, 2 Muffins, 2 Cupcakes.

41. 3 Chocolate chip cookies
42. 2 Oatmeal muffins
43. 2 Cupcakes

CLASS PROJECT – All classes are combined (only 1 per room)

44. Create a barn using materials of your choice (e.g., cardboard, popsicle sticks, straws etc.).
Include animals in the barnyard.

Sheila Rasberry Memorial Award - A special prize of \$25 presented to the top school.

Class 47 - YOUTH VEGETABLES/FRUIT/MISCELLANEOUS PRODUCE Youth Vegetable Special up to 16 Years

Committee: Wendy Cousins (905-335-5724), Judi Oates, Glenda Scott

- **IMPORTANT – ALL Entries must be submitted ONLINE via Assist Expo at <https://assistexpo.ca/milton-fall-fair> by Friday September 15, 2023. If you need assistance registering online, please call or visit our office before the deadline date. Late entries are NO LONGER able to be accepted.**
- No Entry Fee
- Only one exhibit, per section, per person
- Please include a 3" x 5" colour photo of your garden (not compulsory)
- Try to make specimen's in the same category as uniform as possible

NOTE: Children's prize money and exhibits are to be picked up on Sunday, September 24th, 2023 at 5:00 pm under the Grandstand upon presentation of stamped exhibitor pass

SECTION

- | | |
|---|------------------------|
| 1. Carrots - 3 specimens | \$4, \$3, \$2. |
| 2. Onions, Spanish - 3 specimens | \$4, \$3, \$2. |
| 3. Peppers, sweet bell variety – 3 specimens | \$4, \$3, \$2. |
| 4. Pumpkin, field - 1 specimen | \$4, \$3, \$2. |
| 5. Tomatoes, red, table variety - 3 specimens | \$4, \$3, \$2. |
| 6. Zucchini, longest - 1 specimen | \$4, \$3, \$2. |
| 7. Display of vegetables, at least 5 varieties,
all home grown, in a max 30" diameter container. | \$15, \$12, \$10, \$8. |

Best in Show – Ribbon
Judge's Choice – Ribbon

Class 48

MARJORIE HALL MEMORIAL FUND YOUTH POSTER COMPETITION

Theme: "PROMOTING YOUR FAIR"

- Sections:
- A. Junior - Youth up to and including Grade 4
 - B. Intermediate - Youth from Grade 5 to Grade 8
 - C. Senior – Youth from Grade 9 to 12.

- Judging Criteria:
- | | |
|--|-----------|
| 1. Overall appearance | 50 points |
| 2. Hand drawn | 35 points |
| 3. OAAS Criteria (size, material, theme) | 15 points |

- Must be hand drawn by a school student.
- Name and date of fair must be clearly shown on poster. No raised items on poster.
- **Poster size:**
 - minimum approximately 22cm x 28cm (8 ½" x 11"), without border
 - maximum approximately 28cm x 44cm (11" x 17"), without border.
- **Each entry must be centered on CARDSTOCK or BRISTOL BOARD exposing a 5.5cm border on all four sides.**
- The winning poster at the 2023 Milton Fall Fair from Sections A, B and C will be eligible to enter the District #5 Fair competition in October 2023. The District winner from there goes on to compete at the Ontario Association of Agricultural Societies Convention in February 2024.
- Posters can be delivered (with attached entry tags) to the Fairgrounds on Wed. Sept. 20th, from 6-9 p.m. or Thurs. Sept. 21st from 9-10:30 a.m. under the Grandstand.
- The first prize poster will be retained by the Halton Agricultural Society.
- Prize money generated from the **Marjorie Hall Memorial Fund**. Mrs. Hall was Secretary-Treasurer of the Halton Agricultural Society from 1975-1993.
- **Prizes:** 1st - \$25.00, 2nd - \$15.00, 3rd - \$10.00.



CLASS 49

SAFETY POSTER CONTEST

Sponsored by:
Klimer Platforms Inc.

THEME:

"Outdoor Safety" – Hey Kids, Put Safety into Play! Outdoor play is all about being active and having fun for everyone. Be creative and show us how you like to play and have fun outside, while still playing in a safe environment. eg. Never play near ponds or rivers, drink water when it's hot and always wear a helmet when riding your bicycle.

SIZE:

Minimum 8 ½" x 14". maximum 11" x 17". Each entry to be centered on cardstock or bristol board exposing no more than a 2" border on all four sides.

Age must be stated on entry form.

- Sections:
- 1. Junior – Up to 8 years
 - 2. Intermediate – 9-11 years
 - 3. Senior – 12-14 years

- Prizes in all sections – 1st - \$6.00, 2nd - \$5.00, 3rd - \$4.00
- Posters to be delivered to the Fairgrounds (under the Grandstand) on Wed. Sept 20th from 3-9 p.m. or Thurs. Sept. 21st from 9-10:30 a.m.
- Rules and regulations are the same as listed on the first page of the Children's Prize List.
- Posters are to be exhibited and judged at the 2023 Milton Fall Fair



New to our Fair? Here's how to Enter

1. Read through our 'Prize & Competition List' located on our website under the *Fall Fair* tab. Decide what classes and sections you wish to enter.
 2. Be sure to read through the *Rules and Regulations* pages, as well as any specific rules and regulations pertaining to your class/section specifically. **CLOSING DATE for all entries is SEPTEMBER 15, 2023.**
 3. **IMPORTANT** – *ALL Entries must be submitted ONLINE via Assist Expo at <https://assistexpo.ca/milton-fall-fair> by Friday September 15, 2023.* If you need assistance registering online, please call or visit our office before the deadline date. Late entries are NO LONGER able to be accepted.
 4. **Entries MUST be submitted online prior to Friday Sept. 15th** at 4:00pm to receive an entry number. If you need assistance you can contact the office for help via E-mail miltonfair@cogeco.net or phone: 905-878-5689. Pick up your entry tags at the office ahead of time, starting September 13. If not, they will be available Wed. Sept 20th until 8:30pm or Thurs Sept 21st until 10am.
 5. Spend time perfecting your exhibits while waiting for Fair weekend to approach. Make sure you are familiar with your entry deadlines/drop-offs. Make sure to bring your exhibit to the Fairgrounds on the date its due, during the specified times located in each class rules & regulations.
 6. During the Fair, be sure to take a stroll through our Homecraft exhibits and displays. Try and find your entries and see if you are a ribbon winner! Don't forget to return on Sunday after the Fair closes, during the specific pick-up times to retrieve your entry.
- If you have any new ideas for future years, please let any of our volunteers wearing green ribbons know. We are always looking for new ideas and volunteers.

Good luck, we hope to see you at our Fair!



Halton Agricultural Society
Mailing Address: 8490 Lawson Road, P.O. Box 142,
Milton ON L9T 8T3
Office Location: Milton Fair Grounds, 136 Robert Street, Milton ON
Phone: (905) 878-5689
E-mail: miltonfair@cogeco.net